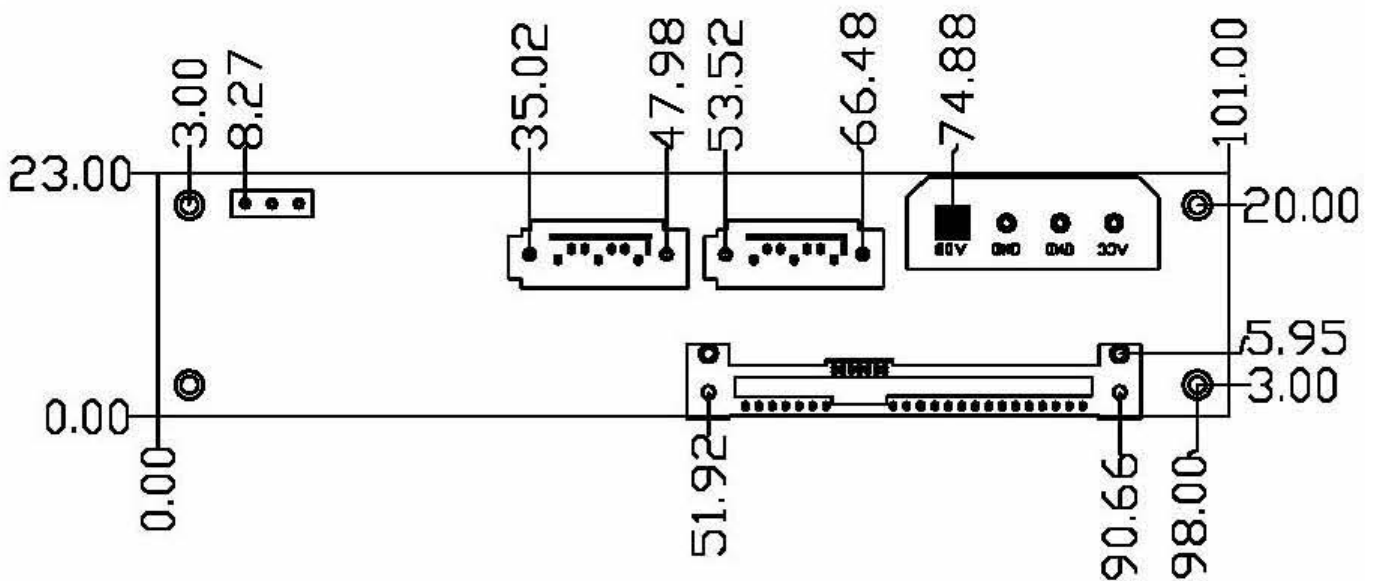


## I . 1 port SAS and SATA II Backplane Specification:

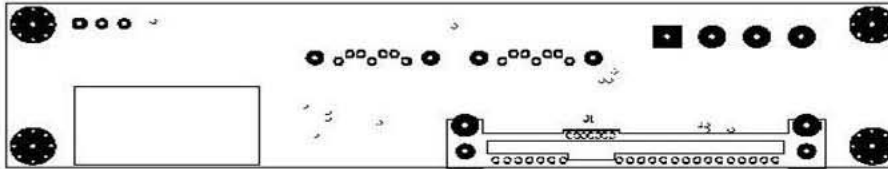
- Support SAS and SATA II 3Gb/s backward compatibility.
- Support device 29 pin SAS and SATA compatible connector.
- Support device inrush current control for Hot-swapping.
- Support primary blue color 7 pin SATA II connectors.
- Support secondary black color 7 pin SATA II connectors.
- Support external hard disk insert power LED and access LED shown pin header.
- Support one big 4-pin D-type DC power connectors.
- Support DC +12V and DC +5V and DC +3.3V.

## II .Connectors Layout: 4 layers.

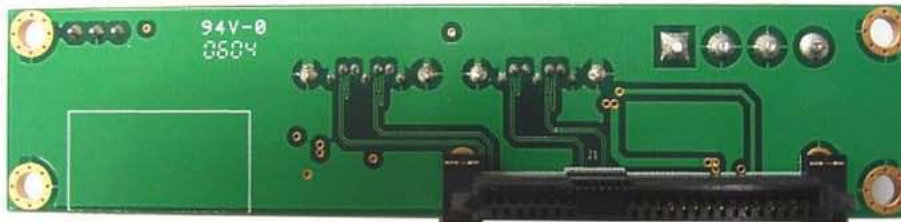
- Dimension: 101.00 mm X 23.0mm X 2.0 mm



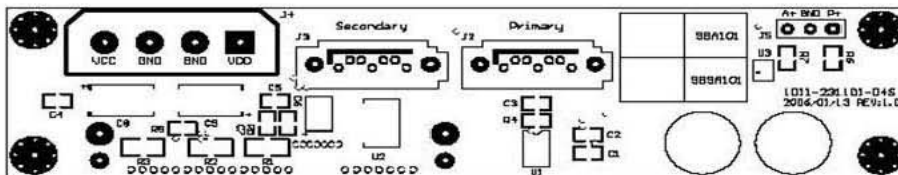
- Top and bottom side:



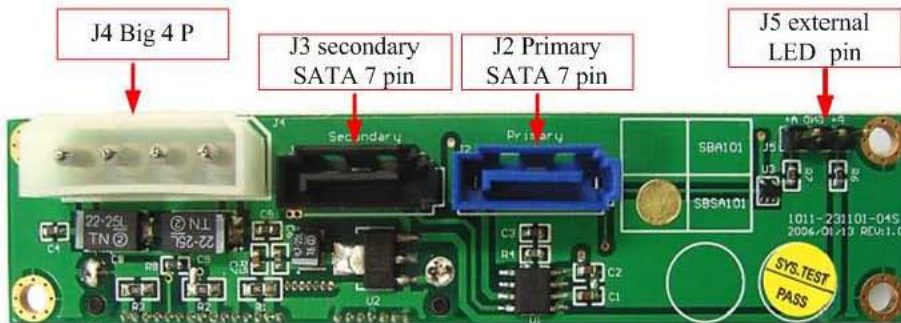
SCREEN SILK TOP



J1 29 pin

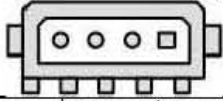


SCREEN SILK BOTTOM



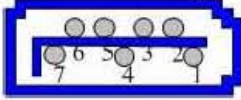
### III. Pin Assignment

- J4 Pin Output: connect to power supply.



4	DC +5V	3	GND	2	GND	1	DC +12V
---	--------	---	-----	---	-----	---	---------

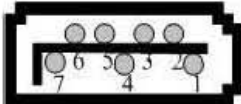
- J2 SAS primary connector Pin Output: 7 pin SATA II blue connector.



For SAS primary port use.

7	GND	6	RS+	5	RS-	4	GND	3	TS-	2	TS+	1	GND
---	-----	---	-----	---	-----	---	-----	---	-----	---	-----	---	-----

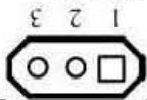
- J3 SAS secondary connector Pin Output: 7 pin SATA II black connector.



Only SAS secondary port connector use.

1	GND	2	RS+	3	RS-	4	GND	5	TS-	6	TS+	7	GND
---	-----	---	-----	---	-----	---	-----	---	-----	---	-----	---	-----

- J5 Pin Output: external LED.



3	Access LED +	2	GND	1	Power LED +
---	--------------	---	-----	---	-------------

### IV. Emphasis component BOM list

NO	Maker Product Spec	Maker Name	Qty	Remark
1	SATA 29 PIN connector	J1	1	2005/6/1
2	SATA II 7 PIN BLUE color	J2	1	SH403786-1_CHEM
3	SATA II 7 PIN black color	J3	1	SH403786-1_CHEM
4	BIG 4 P D-TYPE	J4	1	CE/2004/10846B CE/2005/31380A
5	External LED PIN	J5	1	CE/2004/C3037 CE/2004/C3039
6	Power control mosfet IC(7304)	U1	1	CE/2005/55525
7	Resister	all	all	CE/2003/82013 CE/2003/A0695 KA/2004/B0323
8	Capacitor	all	all	CE/2004/A0289 CE/2004/82581 CE/2004/82582 CE/2004/82580
9	CAPACITOR T/C	ALL	All	CE/2004/42263A
10	Pin header	J5	pcs	CE/2004/C3037
11	pcb	pcb	pcs	ET94O-07-31-1-3