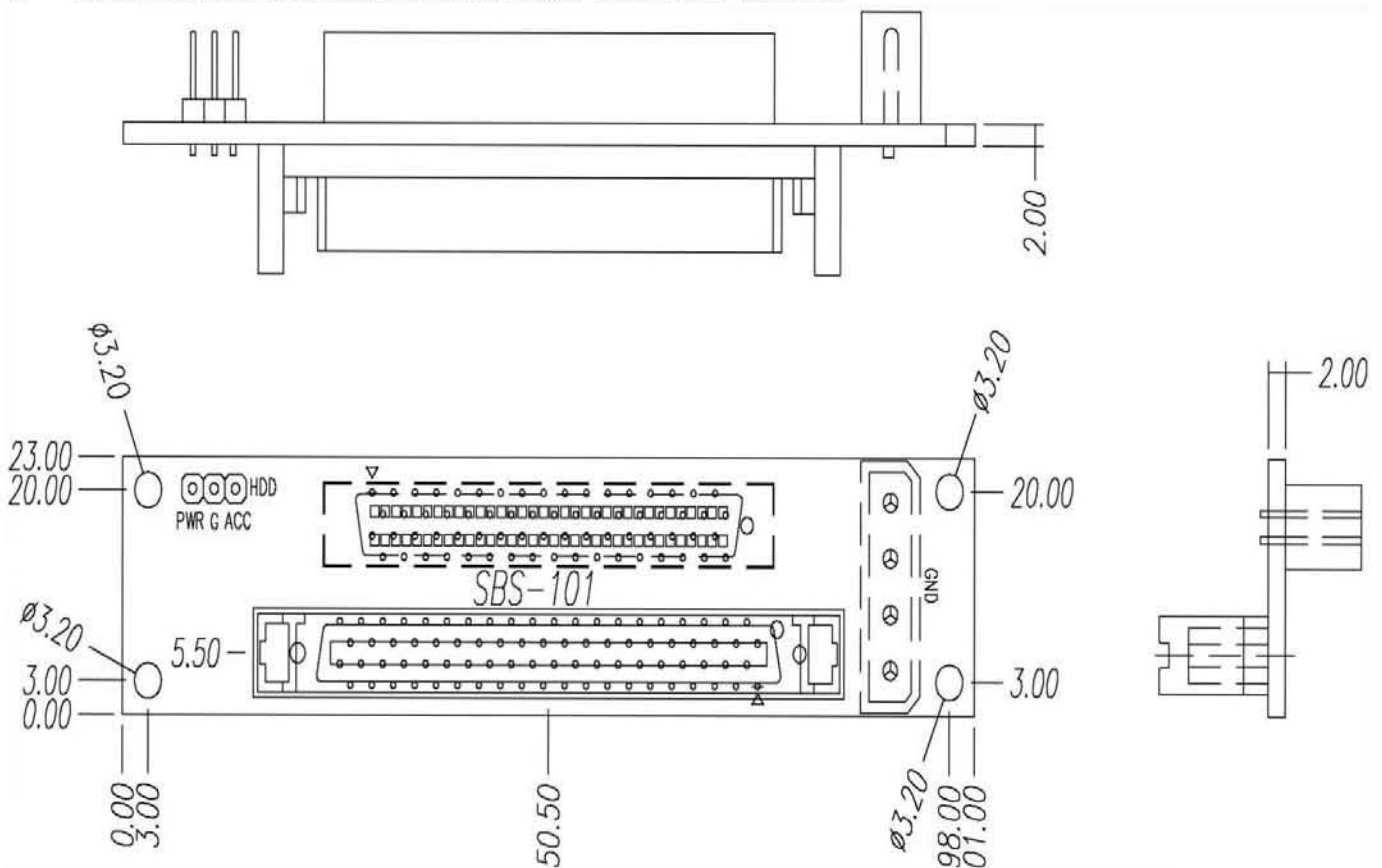
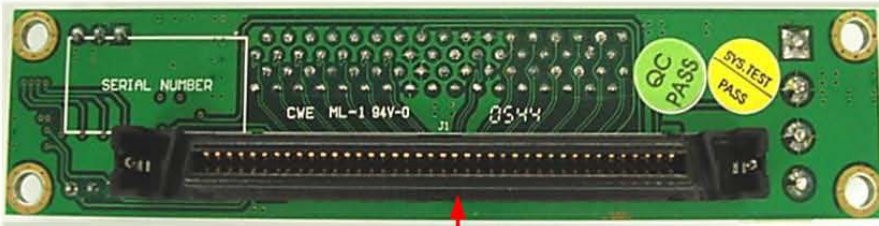
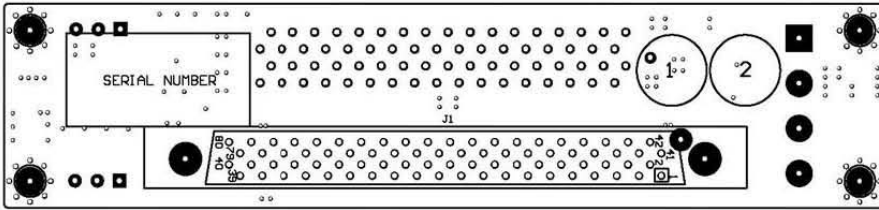


I .1 port SCSI Back-plane Specification:

- Support SCSI interface: Ultra 320/160 backward compatibility.
 - Support 1 pcs hard disk 80pin SCA2 Ultra 320/160 backward compatibility.
 - Support 1 pcs SCSI-IN connector. (68 pin female)
 - Support 1-bay hard disk drive inrush current control for Hot-swapping.
 - Support hard disk Delay_Start or Remote_Start select.(default set DLY)
 - Support 1 pcs power connectors in big 4-pin D-type.
 - Support 1 external LED's monitoring for HDD installation, HDD access LED pin.
 - Support hard disk ID setting for DIPSW 2 x 4 P, default ID is ID0.
-
- II. Dimension: Pcb layer : 4
 - Dimension:101.0 mm X 23.0 mm X 2.0mm

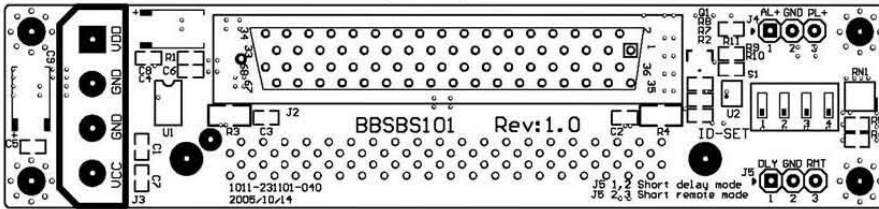


● **TOP AND BOTTOM SIDE**
 23-5101-010 2005,10,12



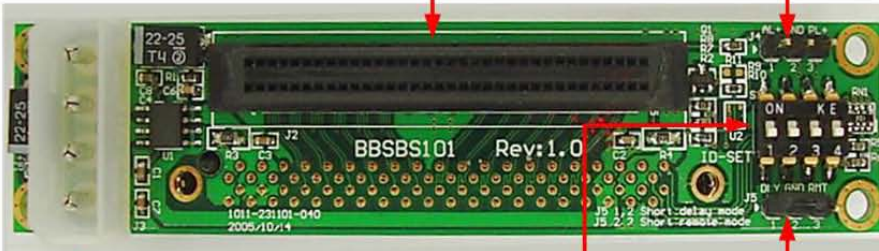
J1 SCA2 80 pin

23-5101-010 2005,10,12



J2 SCSI 68 pin

J4 1 X 3 pin 2.54mm PLED/ALED

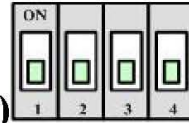


J3 power 4P

S1 DIPSW 2X4P ID SET

J5 1 X 3 pin 2.54mm DLY/RMT select

III. Pin Assignment

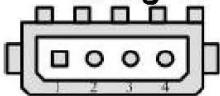


● **SCSI ID Settings (S1 setting function)**

SCSI ID	Switch 1 ID=1	Switch 2 ID=2	Switch 3 ID=4	Switch ID=8
0	OFF	OFF	OFF	OFF
1	ON	OFF	OFF	OFF
2	OFF	ON	OFF	OFF
3	ON	ON	OFF	OFF
4	OFF	OFF	ON	OFF
5	ON	OFF	ON	OFF
6	OFF	ON	ON	OFF
7	ON	ON	ON	OFF
8	OFF	OFF	OFF	ON
9	ON	OFF	OFF	ON
10	OFF	ON	OFF	ON
11	ON	ON	OFF	ON
12	OFF	OFF	ON	ON
13	ON	OFF	ON	ON
14	OFF	ON	ON	ON
15	ON	ON	ON	ON

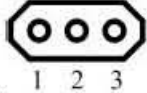
- *Please avoid setting SCSI ID 7 for SCSI drive.*
- *It is normally occupied SCSI host adapter.*
- *The default setting on left SCSI backplane is from ID 0*

- **J3 big 4 P pin output:**



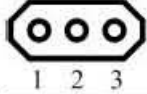
1	+12V	2	GND	3	GND	4	+5V
---	------	---	-----	---	-----	---	-----

● J4 external LED pin out



1	Access LED+	2	GND	3	Power LED+
---	-------------	---	-----	---	------------

● J5 Hard disk motor spin mode select pin out



1	Delay_Start	2	GND	3	Remote_Start
---	-------------	---	-----	---	--------------

IV.Emphasis component BOM list

NO	Maker Product Spec	Maker Name	Qty	Lead free No
1	SCA2 80 PIN	J1	1	CE/2005/96003
2	SCSI 68 PIN	J2	1	SZTYR050305104/LP
3	BIG 4 P D-TYPE	J3	1	CE/2005/31380A
4	ID SET SMD DIPSW 2X4P	S1	1	CE/2005/61637
5	1X3 pin header 2.54mm 180 deg	J4	1	CE/2004/C3037
6	1X3 pin header 2.54mm 180 deg	J5	1	CE/2004/C3037